

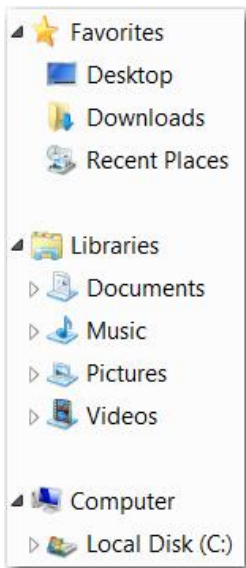


LAUNCHER

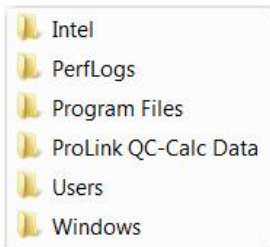
Reference: **Create a Multiple GageXpress Program File Launcher**

Over 200 application files can be created so that GageXpress programs can be selected in either PRO or PROFILE. All files are located in the GageXpress system directory to setup and run Launcher.

1) First the Launcher program will be established. Open the local disk under Computer.



2) Open the Program Files Directory.

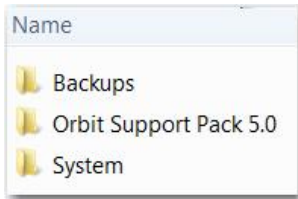




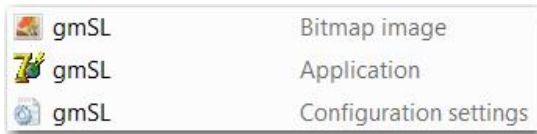
3) Select the Sterling ProMeasure Inc directory.



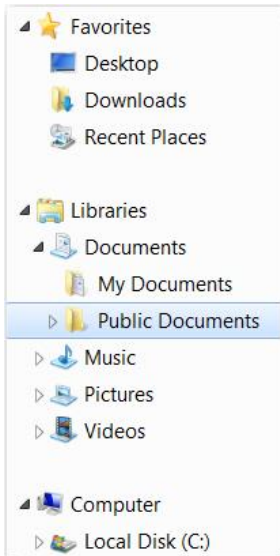
4) Open the system folder.



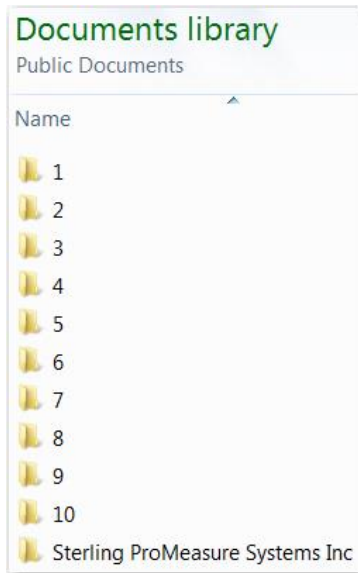
5) Locate the gmSL files. The gmSL application can be linked to a shortcut on the desktop. The bitmap and configuration settings will be placed in the Public Documents > Sterling ProMeasure Systems Inc > GageXpress application directory that will be created.



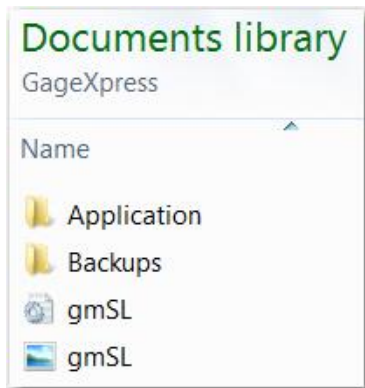
6) Locate the Public Documents directory.



6) Locate the Public Documents directory. In the directory there will be the Sterling ProMeasure Systems Inc directory.



7) Place the gmSL configuration settings file in the GageXpress directory. The bmp can also be placed in the directory. A new bitmap can also be created with the company logo or gage picture that will be visible on the launcher screen.



8) Open the gmSL configuration settings file (ini) in Notepad and create the paths to the GageXpress files to be accessed. Program names in the paths will be displayed in the Launcher program. They can be changed to file or part names. The number of the application folder refers to the files that will be created in the public document directory. The directory used must have a unique name that is in the path like “\1\application\”. In this example the directories are numbered. Any unique name can be chosen but it must match the directory names that will be created in the Public Document Directory. Save the changes by going to File and selecting save.

```

gmSL - Notepad
File Edit Format View Help
DC Caption = Run
SE Caption = Edit
SE Enabled = true
Default Setup = 0
Instruction = USM GAGE SYSTEM - SELECT PROGRAM TO RUN
Program #1 | C:\Documents and Settings\All Users\Documents\1\application\
Program #2 | C:\Documents and Settings\All Users\Documents\2\application\
Program #3 | C:\Documents and Settings\All Users\Documents\3\application\
Program #4 | C:\Documents and Settings\All Users\Documents\4\application\
Program #5 | C:\Documents and Settings\All Users\Documents\5\application\
Program #6 | C:\Documents and Settings\All Users\Documents\6\application\
Program #7 | C:\Documents and Settings\All Users\Documents\7\application\
Program #8 | C:\Documents and Settings\All Users\Documents\8\application\
Program #9 | C:\Documents and Settings\All Users\Documents\9\application\
Program #10 | C:\Documents and Settings\All Users\Documents\10\application\

```

9) The directories are created using names that match the information in the file paths.



10) To open Launch and access Pro and Profile select the Launcher Icon. The name can be changed to reflect the gage or part program.

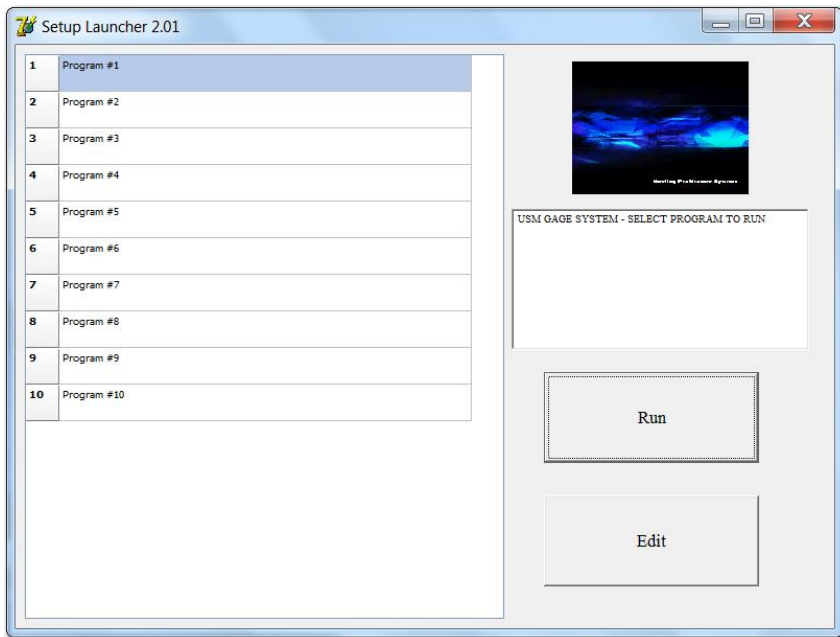


11) In the Launcher Window the program name can be selected. EDIT will open PROFILE. RUN will open PRO. Each location can be opened by using EDIT and the GageXpress configuration file can be loaded by using the Load and Backup function. Each application file will be stored in the selected directory. In this case there are 10 locations created to store 10 GageXpress programs.

When each location is opened with Edit for the first time, it will take a little more time. A new Application file is being created.

For the more advanced user, the original application directory of the GageXpress can be copied and placed in the new directories created in public documents.

Always verify that the designation given to the directories for each program has the same name in the gmSL.ini file.



END